

RF Medical invites you to the hands-on tumour ablation workshops at CIRSE 2014

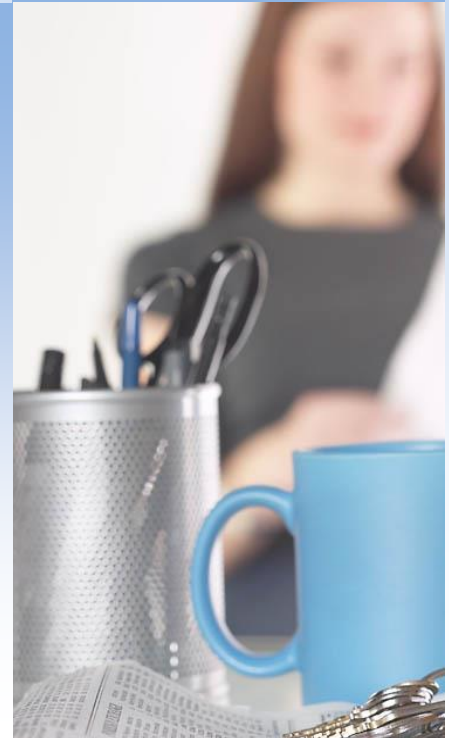
RF Medical will be participating in the tumour ablation Hands-on Workshops at CIRSE 2014.

This year's CIRSE is in Glasgow, UK. As every year, RF Medical will also be participating at CIRSE. This year RF Medical also took the initiative of participating in the tumour ablation Hands-on Workshops. There will be 5 sessions that include introductory interactive case discussions and practical training in the basic principles of all currently available ablation systems.



Participants will have the opportunity to get familiar with the equipment and the procedure itself, to practice ablation with the guidance of international experts and to perform ultrasound guided ablations on in vitro models using the cutting edge M-3004 generator (pictured above) that has tissue specific applications for the ablation of liver, kidney, bone, thyroid and more.

After the workshop participants with little or no prior experience in tumour ablation will be familiar with a range of ablation techniques and be aware of the tips and tricks for safe and efficacious clinical application.



Dates and Times of Hands-on Workshops

TA-HoW 1 / Liver

Saturday, September 13 (13:00-14:30)

TA-HoW 2 / Liver

Saturday, September 13 (16:00-17:30)

TA-HoW 3 / Thyroid gland

Sunday, September 14 (13:00-14:30)

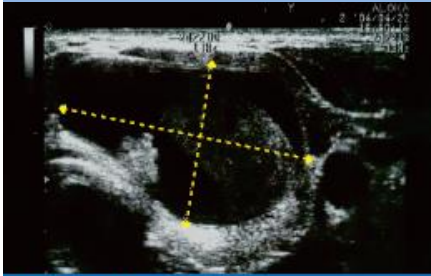
TA-HoW 4 / Bone & soft tissue

Monday, September 15 (13:00-14:30)

TA-HoW 5 / Kidney

Tuesday, September 16 (13:00-14:30)

Location: HoW Room 3



Before - Nodule size 4.6cm



After 6 Months - Nodule size 0.8cm

The objectives of the workshops:

- To understand the indications of ablation according to present guidelines and expertise.
- To understand how to enhance the efficacy of a specific ablation technique.
- To understand how to avoid the most commonly encountered complications
- To become familiar with ultrasound guided ablation.
- To become familiar with tricks and tips used in each application.

More information, including on registration for the workshops can be found at the CIRSE website at <http://www.cirse.org>.

RF Medical will be located in booth 62 in the exhibition hall. Please visit us before or after the workshops so we can answer any questions that you may have.

RFMedical Co., Ltd.

**503 World Meridian
60-24 Gasan-dong,
Geumcheon-gu,
Seoul,
Korea**

**Tel: +82-2-2108-4200
Fax: +82-2-2108-4209**

www.rfa.co.kr



Workshop coordinators and instructors

Coordinators:

T.K. Helmberger (Munich/DE), A.D. Kelekis (Athens/GR)

TA-HoW 1 / Liver instructors:

D.K. Filippiadis (Athens/GR), P.L. Pereira (Heibronn/DE), V. Valek (Brno/CZ)

TA-HoW 2 / Liver instructors:

L. Crocetti (Pisa/IT), S. Roy-Choudhury (Birmingham/UK), C.T. Sofocleus (New York/US)

TA-HoW 3 / Thyroid gland instructors:

J.H. Baek (Seoul/KR), F. Stacul (Trieste/IT)

TA-HoW 4 / Bone & soft tissue instructors:

S. Marcia (Cagliari/IT), C. Trumm (Munich/DE), G. Tsoumakidou (Strasbourg/FR)

TA-HoW 5 / Kidney instructors:

G. Carrafiello (Varese/IT), C.S. Georgiades (Nicosia/CY), S.M. Tutton (Milwaukee/US)